

PART OF N.W. 1/4 OF SEC. 22, T.5N., R.2W., S. LB. & M.

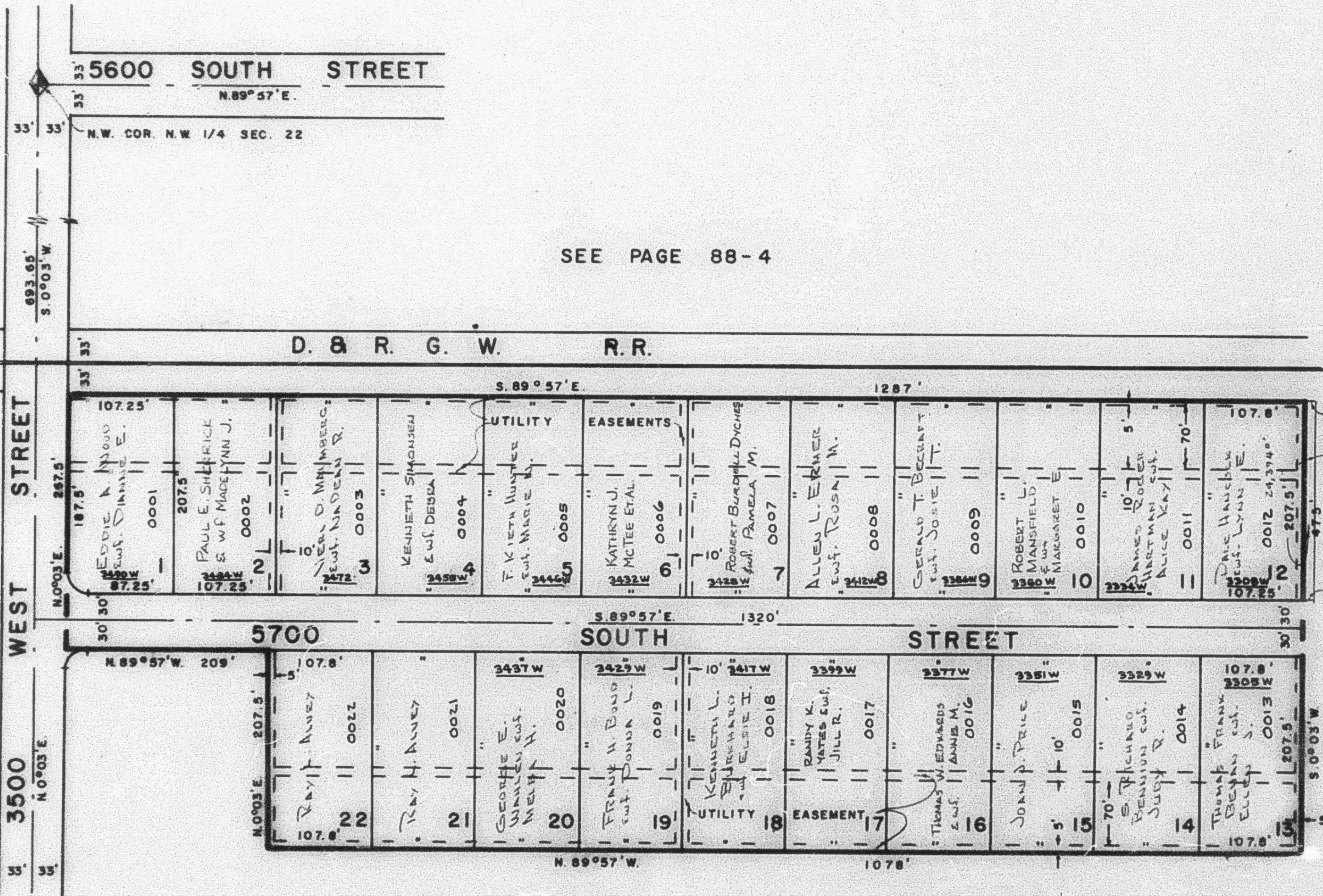
90

PONY ACRE ESTATES

TAXING UNIT : 41

IN ROY CITY
SCALE 1" = 100'

PREFIX : 09-090



SEE PAGE 84

SEE PAGE 158

SEE PAGE 88-4